

The entero Mobility Framework

Developing and implementing your enterprise mobility strategy

More and more mobile devices are used today for business purposes. Users want to access business data like mails or documents with their private devices. Mobility is growing at an enormous speed and business units do not hesitate to take action if their IT department is too slow to deliver mobile solutions.

While mobile solutions can improve business processes or even create new business models mobility brings also new challenges. For developing, testing, deploying and running mobile solutions relevant projects need to be realized in a controlled manner. Otherwise IT complexity and costs will increase and risks can arise in many areas.

Reasons why

Addresses all aspects of mobility and is more than just technology

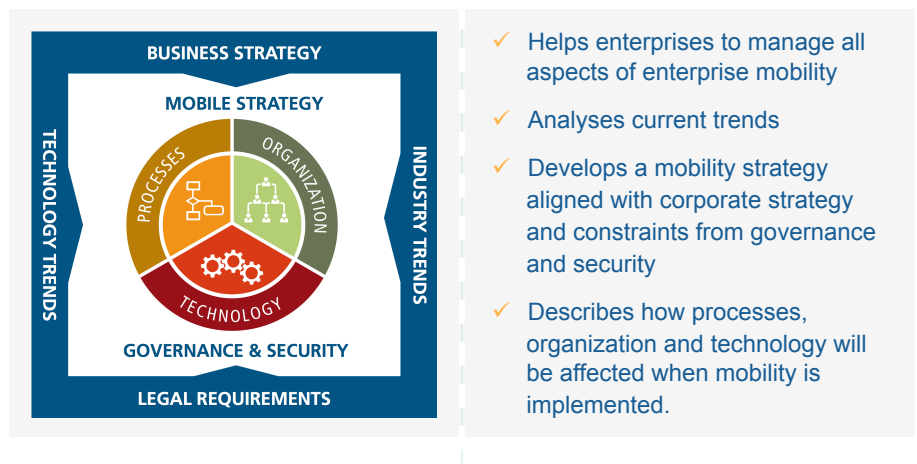
Introduces mobility in a controlled and up-to-speed manner

Includes latest trends and best practices for mobility

Focusses on business benefits from mobile solutions

Is configurable and adaptable to your specific needs

entero Mobility Framework



Organization, processes, technologies: \$ success stories

„If you don't have a mobile strategy, you don't have a future strategy.“

Eric Schmidt
Executive Chairman
Google Inc., Mountain View, USA

Chemicals. For the implementation of its mobility strategy and for the development of mobile solutions the international player is using enteros mobility framework. Pilot applications (e.g. SAP Fiori) have been successfully deployed.

Automotive. By the optimized use of mobile devices the manufacturers maintenance department can act better, faster and more efficient. Maintenance processes are well documented and fully integrated with the central SAP system.

Retail. With the introduction of Kony as common app development platform the foundations for an integrated mobility application landscape are laid. Mobile apps are deployed and for the international group a common developer portal will be established.



Framework as the „Big Picture“ for enterprise mobility Adapting the framework to your specific needs

The framework can be adapted to the needs of an enterprise depending on already achieved mobility maturity. In the initialization phase of the project interviews with mobility stakeholders will be conducted and existing documentation reviewed. As a result entero configures the framework by selecting components which shall be in focus and discusses this proposal with the customer for a specific engagement offering.

Exemplary activities and deliverables in the framework components

Trends & Strategy	Analysis of trends impacting the mobile strategy Mobility status versus status of competitors Development of a mobility roadmap
Governance & Security	Coverage of mobile business requirements in policies Assessment of security status and potential gaps Requirements to be included for BYOD implementation
Organization	Best practices for a mobility center of excellence Definition of roles and responsibilities for mobility Support organization needed for mobility
Processes	Identification of mobile potentials in business processes Creation of a mobility heat map Benefits to be achieved by mobile applications
Technology	Activities in all lifecycle phases of a mobile application Management of mobile applications and devices Mobile application development strategies

Grow your mobile solutions with a network of partners

If your mobility framework is taking shape and advances from concept to implementation entero can help you with its network of experienced mobility partners. Solution experts for SAP FIORI applications or the KONY development platform can support you in all lifecycle phases of your mobile solutions. Demos and success stories from completed implementations are available for you.



entero profile

Integrated business- and IT-consultancy with SAP and Salesforce as core competencies

Independent and owner-driven

Focus in discrete industry – from ambitious mid-size enterprise to DAX-listed group

Active network of cooperation partners and qualified freelancers

Locations in Eschborn near Frankfurt and Munich

Your contact

Interested? Our responsible manager will answer your questions at any time:

Christian Behr, Director
+49 6196 77125 822
christian.behr@entero.de